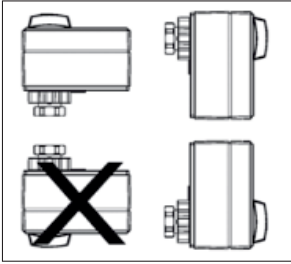


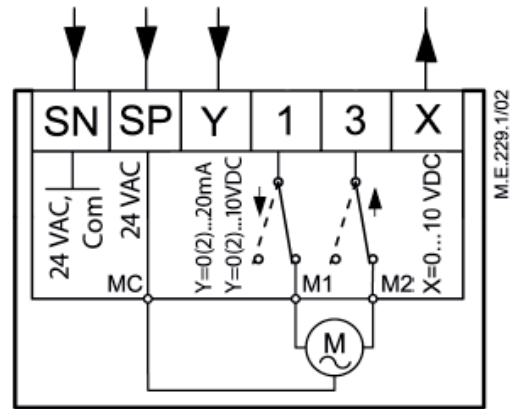


## Orientation



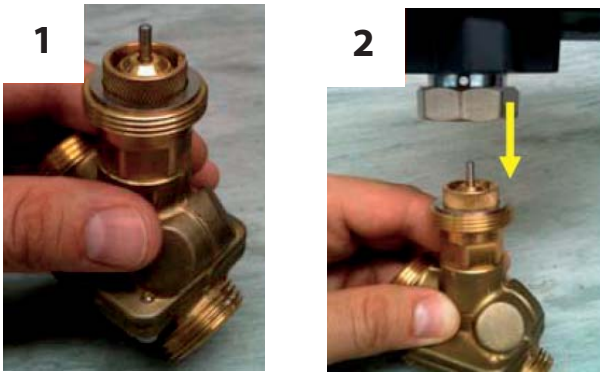
The actuator should be mounted with the valve stem in either horizontal position or pointing upwards. The actuator is fixed to the valve body by means of a mounting ring which is tightened by hand and requires no additional tools for mounting. Prior to wiring the valve it is recommended that the actuator is mounted.

## Wiring



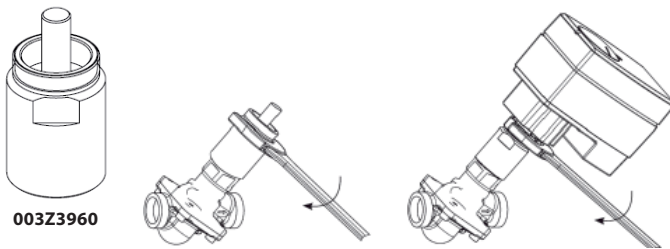
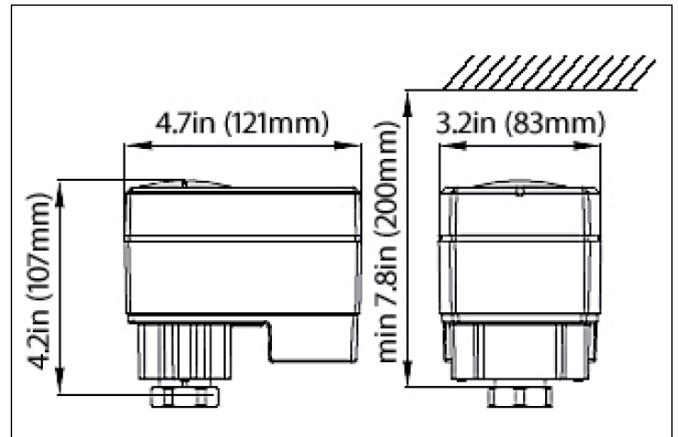
- SP** 24 VAC/DC ..... Power supply
- SN** Neutral ..... Common
- Y** 0(2) to 10VDC ..... Input Signal  
0(4) to 20mA
- X** 0(2) to 10VDC ..... Output signal

## Mounting



AME 13 SD (**082G3006**):  
A spacer (prt# **003Z0257**) is required to be placed between the AB-QM valve body and the motor actuator. Then the actuator is tightened to the valve.

## Dimensions



AME 13 SU (**082H3044**):  
An adapter (prt# **003Z3960**) is required to be installed onto the AB-QM valve prior to the installation of the actuator. Then the actuator is tightened to the valve.